



Mobile Printers

MX20

With MX20 on hand, label printing becomes so simple between your fingertips.

MX20 is powered by high capacity lithium-ion battery, armored with water/dust/shock resistant feature, supported with drop-and-fit design; it is your ultimate weapon to take on the challenges from mobile applications in retail / warehouse & storage / parking receipt industry and many more.



- Drop & Fit label installation design.
- Long standby time up to 72 hours or 300 label cycles between charges.
- IP54 water / dust resistant and 1.5M shock resistant.
- Supports both wire (RS232 and USB ports)

GoDEX

Specification

MX20

Mobile Printer

Model	MX20
Print Method	Direct Thermal
Resolution	203 dpi (8 dots/mm)
Print Speed	Up to 4 IPS (101.6 mm/s)
Print Width	1.89" (48 mm)
Print Length	45" (~1142 mm)
Processor	32 Bit RISC CPU
Memory Flash	128 MB Flash (60 MB for user storage)
SDRAM	32 MB
Sensor Type	Gap sensor , Fixed transmissive sensor , Fixed reflective sensor
Media Types	Direct Thermal receipt, anti-UV receipt, gap label, center alignment Inter-label gap size from 2 mm to 4 mm. 3 mm preferred
Width	2.28" (59 mm) fixed
Thickness	Min 0.0508 mm, Max 0.165 mm
Media roll Diameter	Max. 1.57" (40 mm)
Printer Language	GPOS Emulations or EZPL / GZPL / GEPL Emulations
Software Label Design Software	GoLabel (for EZPL only), GoApp (Andriod),GoApp (iOS)
Driver	MAC, Linux, Windows 2000 / XP / VISTA / Windows 7 / Windows 8.1/Windows 10
DLL	Win CE, .NET, Andriod, Windows Mobile, Windows 2000 / XP / VISTA / Windows 7 / Windows 8.1
Resident Fonts Bitmap Fonts	6, 8, 10, 12, 14, 18, 24, 30, 16x26 and OCR A & B. 0°, 90°, 180°, 270° rotatable
TTF Fonts	TTF Fonts (Bold / Italic / Underline). 0°,90°, 180°, 270° rotatable
Download Fonts Bitmap Fonts	90°, 180°, 270° rotatable, single characters 90°, 180°, 270° rotatable
Asian Fonts	16x16, 24x24, Traditional Chinese (BIG-5), Simplified Chinese (GB2312), Japanese (S - JIS), Korean (KS - X1001)
TTF Fonts	90°, 180°, 270° rotatable and 8 times expandable in horizontal and vertical directions TTF Fonts (Bold / Italic / Underline). 0°,90°, 180°, 270° rotatable
Barcodes 1-D Bar codes	Code 39, Code 93, EAN-8, EAN-13, EAN 8/13 (with 2 & 5 digits extension), UPC-A, UPC-E, UPC-A and UPC-E with EAN 2 or 5 digit extension, Interleaved 2-of-5 (I 2 of 5), Interleaved 2- of 5 with Shipping Bearer Bars, Codabar, Code 128 (subset A, B, C), EAN 128, RPS 128, UCC 128, UCC/EAN-128 K-Mart, Random Weight, Postnet, ITF 14, China Postal Code, HIBC, MSI, Plessey, Telepen, FIM, GS1 DataBar, German Post Code, Planet 11 & 13 digit, Japanese Postnet, Standard 2 of 5, Industrial 2 of 5, Logmars, Code 11, ISBT -128, Code 32
2-D Bar codes	PDF417, Datamatrix code, MaxiCode, QR code, Micro PDF417, Micro QR code and Aztec code, Code 49, Codablock F, TLC 39
Code Pages	CODEPAGE 437, 850, 851, 852, 855, 857, 860, 861, 862, 863, 865, 866, 869, 737 WINDOWS 1250, 1251, 1252, 1253, 1254, 1255, 1257 Unicode UTF8 \ UTF16BE \ UTF16LE
Graphics	Resident graphic file types are BMP and PCX, other graphic formats are downloadable from the software
Interfaces	RS232 + USB 2.0 port, mini-B type connector Bluetooth 2.1 + EDR
Control Panel	4 dual color LEDs for Power, Battery, Communication, Error status indication. 3 buttons for Power, Feed and BT functions
Power Adapter	Switching power supply I/P: 100 / 240 V AC, 50 / 60 Hz, DC 9 V / 2.2 A
Battery	Rechargeable DC 7.4 V Lithium-ion battery, 1150 mAH or higher capacitance
Environment Operation Temperature	14 °F to 122 °F (-10°C to 50°C)
Storage Temperature	-4 °F to 140 °F (-20°C to 60°C)
Humidity Operation	10 – 90 % , non - condensing.
Storage	10 – 90 % , non - condensing.
IP Rating	Intrusion Protection, IP42 requirement for case design, IP54 for protective case
Drop Level	1.5 meter height
Agency Approvals	CE EMC, FCC part 15B class B, FCC Part 15C, SRRC, NCC, CB, UL, cUL
Dimension Height	2.0" (51 mm)
Width	3.3" (84 mm)
Length	5.1" (129.55 mm)
Weight	0.72 lbs (325 g), with battery
Options & Accessories	Switching power supply USB cable RS-232 cable Li-ion battery 4-bay battery charger station Car charger adapter Protective case

**Specifications are subject to change without notice. All company and/or product names are trademarks and/or registered trademarks of their respective owners.

Minimum print height and maximum print speed specification compliance can be dependent on non-standard material variables such as label type, thickness, spacing, liner construction, etc. Godex is pleased to test non-standard materials for minimum print height and maximum print speed capability.

Applications

Applications for Labels & Barcodes

MX20 support label & barcode printings Anywhere and Anytime.



Warehouses, Logistic & Transportation

Cross Docking, inventory management, receiving / shipping, work - in - process tracking, or related industrial applications.

Retail

Content labels, receipts for registered mails, invoices & receipts, postage labels, etc.

Parking Management

Parking receipt, parking ticket, and so on.

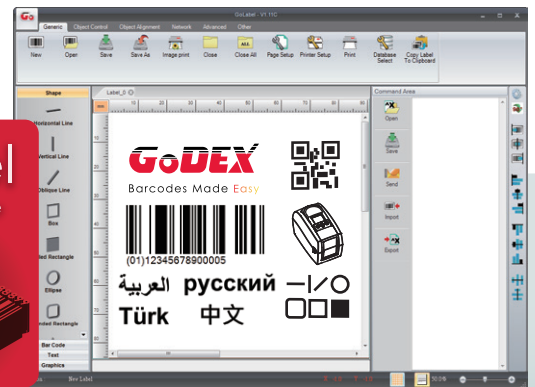
GoDEX

LABEL DESIGN SOFTWARE

GoLabel Software / User Friendly

GoLabel is based on a WYSIWYG (what you see is what you get) user interface, makes everything so easy for you to create and print barcode labels. GoLabel is the first - choice label design software that you can't miss it!

Go visit www.godexintl.com and download GoLabel to experience it!



GoDEX

RIBBONS

High quality original GoDEX thermal transfer ribbons

GoDEX offers premium thermal transfer ribbons that will fit most of your printing applications.

- Wax
- Wax / Resin
- Resin
- Near Edge

