

# Uniq PC 150

User manual

version 1.1.7



This manual was not subject to any language revision.

This manual or any part of it may not be copied, reproduced or otherwise distributed without the consent of the company ELCOM, spoločnosť s ručením obmedzeným, Prešov.

All rights reserved.

© 2013, ELCOM, spoločnosť s ručením obmedzeným, Prešov

---

# TABLE OF CONTENTS

<b>INTRODUCTION</b> .....	<b>33</b>
Important notice .....	34
Conformity declaration .....	35
<b>PRODUCT DESCRIPTION</b> .....	<b>36</b>
Parts of the uniq pc, basic features .....	37
Opportunities for attaching peripheral devices .....	38
<b>HANDLING THE EQUIPMENT</b> .....	<b>40</b>
Switching on .....	41
Switching off .....	41
Restarting .....	41
<b>Calibration of the touchscreen panel</b> .....	<b>41</b>
4-Point Calibration .....	42
Clear and Calibrate .....	42
Linearization .....	42
Draw Test .....	43
<b>Setting up the touch panel</b> .....	<b>43</b>
<b>Setting up the monitor in OS Windows</b> .....	<b>44</b>
Setting the contrast and brightness .....	44
Rotating the image by 180° .....	44
<b>EMERGENCY HELP</b> .....	<b>50</b>
Restoring the operating system in case of malfunction .....	51
<b>WAYS OF MOUNTING</b> .....	<b>52</b>
Placement on a vertical surface (wall) for standard stand .....	53
The base tube 500 mm and 1300 mm .....	54
Identification and protective elements .....	56



# ***INTRODUCTION***

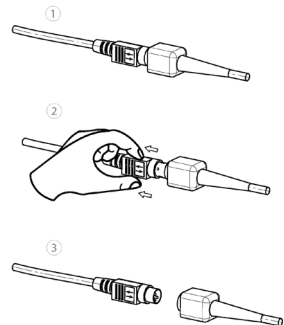
Thank you for choosing the Uniq PC. Please read this user manual before you begin using the equipment in order to become familiar with its features and functions. Also keep this user manual for future use. It will help you solve problems that may arise.

## IMPORTANT NOTICE

- The device must be under permanent supervision while "ON" or in "STAND BY" mode until it is turned "OFF" by the central switch and disconnected from the electrical system.
- Do not leave the device unattended while charging.
- Use only the power adapter and cable approved by ELCOM. Unauthorized adapters or cables can cause batteries to explode or damage the device.
- Improper adapter connection can seriously damage the device. Any damage caused by misuse is not covered under warranty.
- Do not remove the battery before disconnecting the power adapter. This could damage the device.
- Do not charge the device when the power cord is damaged or if the electrical outlet is not grounded. This may cause electric shock or fire.
- If the device overheats, starts to smoke, makes strange noises or strange smells, immediately turn off the main power switch and unplug the device.
- Do not bend the power cord or place heavy objects on it. Stepping on the power cord or its disruption with heavy object could result in electric shock or fire.
- During a storm or when the device is out of service for longer, unplug the power adapter from the electrical outlet to prevent electric shock or fire.
  
- Install the product in a place where it will not be exposed to direct sunlight, unusual changes in temperature (below 0 °C and over 40 °C) or high humidity. Installation in an unsuitable place could cause damage to the casing and electrical components

- Procedure for disconnection of the power connector:

- 1 - Connected connector.
- 2 - Grab the connector by plastic housing, back pulling of housing release the safety catch and it enable to disconnect power connector strength.
- 3 - Plastic housing of disconnected connector returns to the starting position itself



- When transferring the product between environments with different temperatures, do not switch it on for at least 60 minutes.
- Never use aggressive cleaning solutions when cleaning the product surface. The use of unsuitable cleaning solutions can cause damage to the product.



- If the product is not functioning properly, turn to an authorized service technician. Do not attempt to repair the product yourself. Never open the product casing!
- When plugging in this equipment always use the power adapter supplied or one exclusively authorized by the seller. The use of another resource can lead to damage to the source or the product.



- **Notice:** The adapter is specified for interior use only!

- The use of sharp objects for handling the touch screen panel can seriously damage or destroy it.
- When used in spaces having critical temperatures, under certain conditions, the surface of the back accumulator may reach temperatures as high as 60 - 75 ° C.
- This product cannot be cleaned using a stream of strong water spray, nor can it be submerged in water.
- Some electrical equipment producing interference and connected to the same electrical circuit can cause the improper functioning of the equipment. In such cases, use a special anti-jamming device recommended by the manufacturer.
- Unplug the equipment from an electrical socket in order to fully disconnect it from the electrical network.
- The manufacturer is not responsible for any damage caused to the product in the case of improper maintenance or use in a manner other than those described in these instructions.
- The symbol (a crossed-out wastebasket) on the product or its packaging means that the product, upon completion of its lifespan, should not be disposed of in common household waste, but must be taken to a site determined for the collection of worn-out electrical and electronic appliances. Proper liquidation of this product can help preserve natural resources and helps in the prevention of unacceptable impacts on the environment and human health.
- The product contributes to environmental protection through the use of lead-free technology during its production.

## **CONFORMITY DECLARATION**

UNIQ PC 150 meets the requirements of the directives for the European Union market. The complete conformity declaration is available on the address of manufacturer: ELCOM, spoločnosť s ručením obmedzeným, Prešov, Jesenná 2695/26, 080 01 Prešov, Slovensko.

Operation of device with built-in WiFi/RFID module is possible under the conditions of the general license issued by the national frequency regulatory body.

## **WARNING:**

ELCOM notifies owners of the UNIQ PC 150 device, that in case of intervention into the BIOS part and subsequent system damage, the claim for warranty repair will be rejected. An owner will be obligated to refund all costs associated with the device repair.

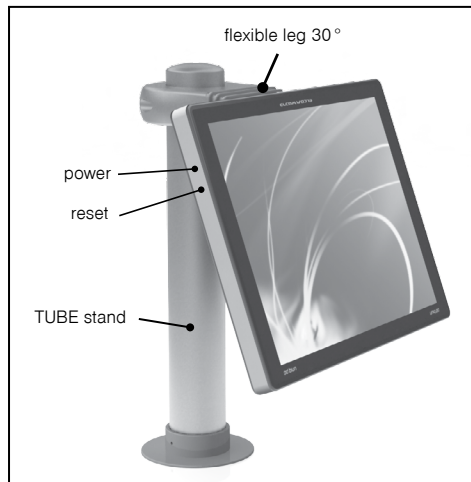
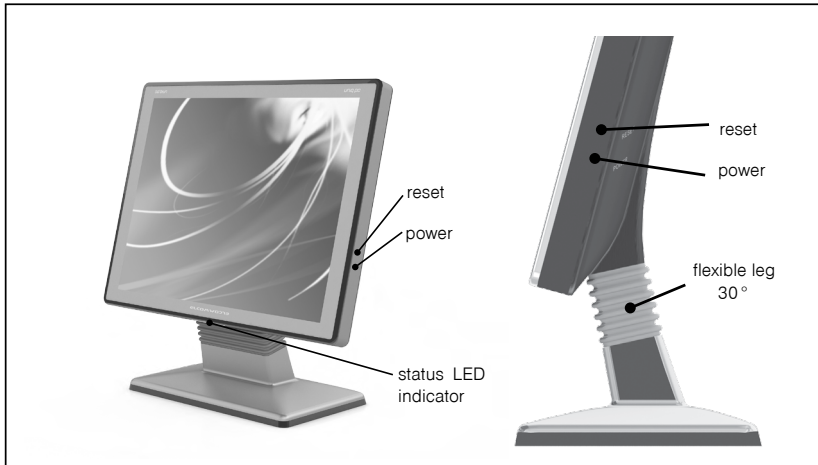
# ***PRODUCT DESCRIPTION***



## **PARTS OF THE UNIQ PC, BASIC FEATURES**

The Uniq PC is a complete solution consisting of a monitor, a computer and a touch screen panel all in one unit. The high-quality production and wide possibilities for use make the Uniq PC a unique solution for your business. The Uniq PC is determined mainly for commercial operations, private and public institutions, or for the medical sector as a surrogate imaging, optical and analysis device in environments calling for high demands of air quality and in sterile environments. Its wide possibilities for use also include the managing of production processes in demanding and complicated conditions while simultaneously preserving simple, intuitive and efficient equipment operation.

**Figure 1.1 – Basic features and controls**



**Table 1.1 – Parameters of the Uniq PC**

Type of monitor	TFT LCD (TN)
Diagonal width	15"
Screen resolution	1024 x 768
Aspect ratio	4:3
CPU	Intel celeron quad core J1900
RAM	2GB (4, 8 GB - optional)
Operating system	Linux CentOS 5.5/Windows 10
Touchscreen display	resistive / capacitive / capacitive vandalproof
Interfaces*	3x USB, LAN, WiFi*, Bluetooth*, VGA*, 3 x serial port RS-232*, audio in/out*
Data storage	2.5" HDD 500 GB, 64 GB SSD (128GB SSD)
Power	Adapter AC/DC 230 V - 12 V, 4000 mA
Ways of anchoring	the base on a table or wall / base Tube / VESA 100
Dimensions of the display	351 x 268 mm (H x W, without the base)
Thickness of the display	38 mm (48 mm - vandalproof version)
Weight	4 kg (without the base)
Construction and protection	IP 20 - connector's side from bottom IP 54 (except connector's side) antibacterial surface - optional
Operating conditions	temperature 0-40 °C, humidity 5%-95% (non-condensing)

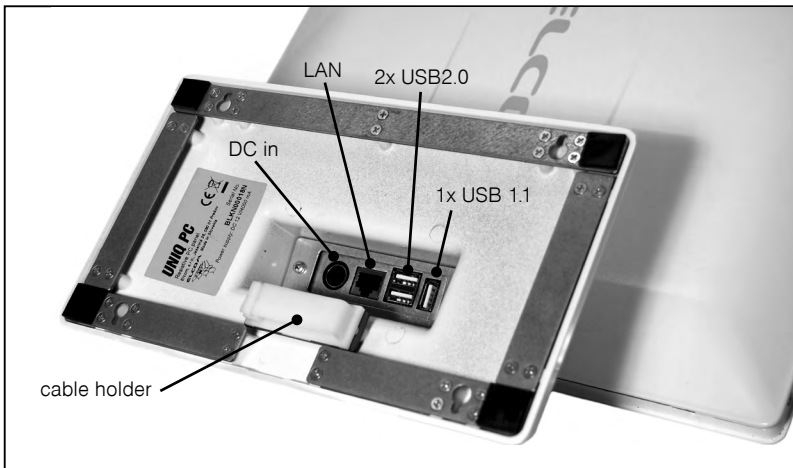
\*optional

## **OPPORTUNITIES FOR ATTACHING PERIPHERAL DEVICES**

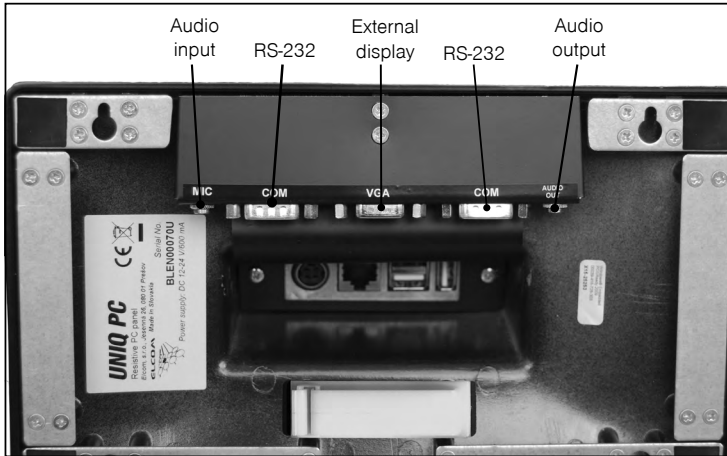
The Uniq PC is a flexible system with a wide range of possibilities for connecting attachments and peripheral devices. These can be attached directly to the Uniq PC or through a replicator port, which allows for discreet placement of cables. The choice of replicator depends on your demands and needs.

You can get more detailed information about replicator ports on our Web page at [www.uniqpc.eu](http://www.uniqpc.eu) or [www.elcom.eu](http://www.elcom.eu).

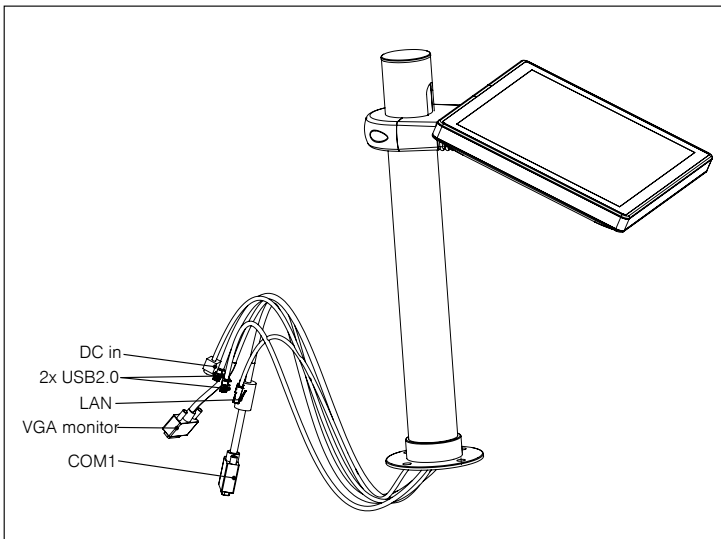
**Figure 1.2 – Description of connectors**



Obrázok 1.3 - Description of extended connectors variant



Obrázok 1.4 - Description of connectors for Tubeholder variant



Note: Pictures for reference only. Optional accessory is depicted.

# ***HANDLING THE EQUIPMENT***

## Switching on

The equipment is switched on by pushing the POWER button on the side panel. The LED indicator will light up and the installed operating system will be launched (Fig. 1.1).

**Note:** For OS Linux CentOS 5.5 is pre-defined user, **username: elcom, password: elcom**  
(root has password **elcom123**)

## Switching off

The equipment can be switched off using the standard operating system procedure, or by pressing the POWER button (OS Windows, Linux) (Fig. 1.1).

## Restarting

If an emergency restart of the equipment is required, press RESET (Fig. 1.1).

## Windows XP

### CALIBRATION OF THE TOUCHSCREEN PANEL

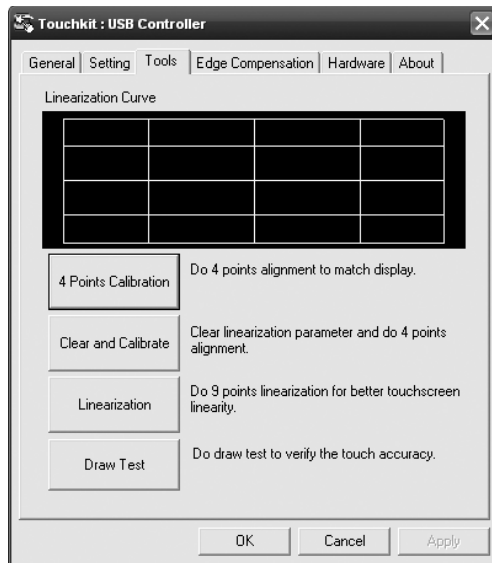
Upon first use of the equipment it is necessary to calibrate the touch screen display. It is also necessary to calibrate the display in cases involving a shift in the calibration points. You can arrive at the calibration of the touch screen display through:

OS Windows: **START - PROGRAMS - TOUCHKIT CONFIGURE UTILITY**

OS Linux CentOS: **SYSTEM - ADMINISTRATION - TOUCHPANEL CALIBRATION**

At which point a window will open showing the different settings tabs. Select the tab "Tools" with the following to fig.2.1.

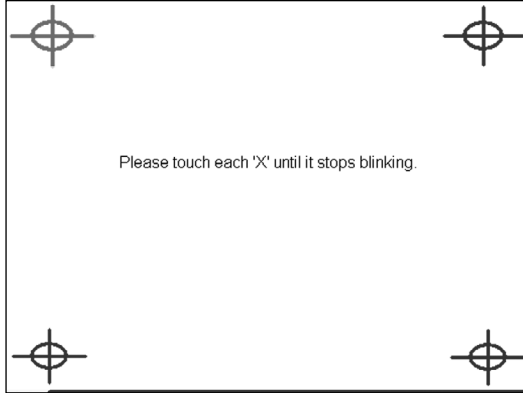
**Figure 2.1 Tab for setting the calibration**



## 4-Point Calibration

During calibration, the symbol of a cross with a circle will gradually appear in each corner of the monitor. For proper calibration, it is necessary to hold down the center of the symbol until it turns blue. In this way you ensure the setting of the exact value regarding the pressing point on the display.

**Figure 2.2 Configuring calibration points during 4-point calibration**



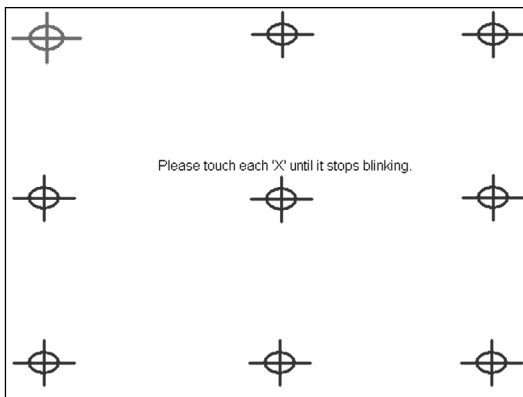
## Clear and Calibrate

This command deletes all current settings of parameters on the touch screen monitor and subsequently performs a 4-point calibration.

## Linearization

This is the calibration of the 9 or 25 points which are uniformly placed on the touch screen monitor. By performing linearization, you will achieve a higher precision and linearity on the touch screen panel. The process for linearization is similar to that of 4-point calibration.

**Figure 2.3 Configuring the calibration points during linearization**



## Draw Test

This instrument serves for verifying the precision and checking the functionality of the touch screen panel. The command "Clear" clears the surface and deletes all objects drawn. The command "Quit" terminates the drawing instrument.

## Setting up the touch panel

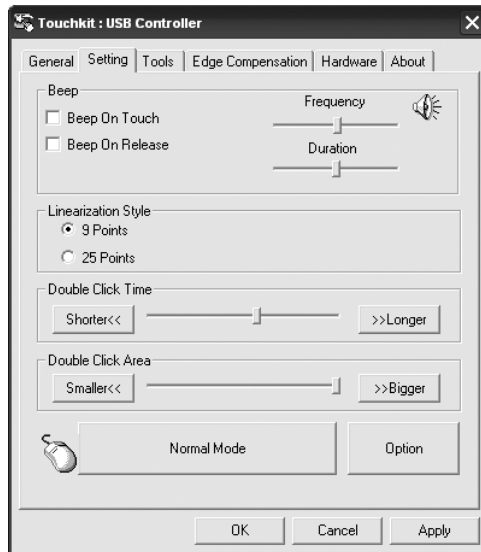
Arrive at the menu for setting up the touch screen panel through:

OS Windows: **START - PROGRAMS - TOUCHKIT CONFIGURE UTILITY**

OS Linux CentOS: **SYSTEM - ADMINISTRATION - TOUCHPANEL CALIBRATION**

A window will open with various tabs. Select the "Settings" tab.

**Figure 2.4 Tab for other settings on the touch screen display**



**Table 2.1 The meaning of the individual functions on the tab for setting the touch screen panel**

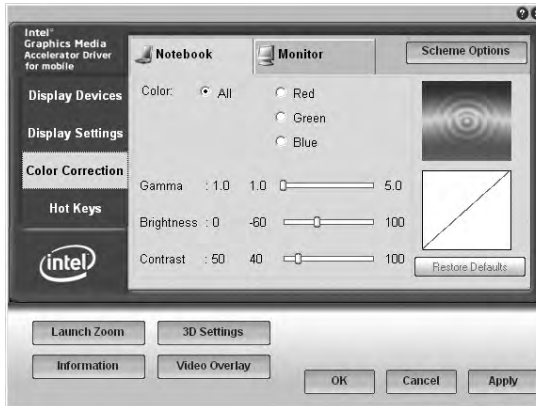
Linearization style	possibility for choosing the type of linearization 9-point or 25-point
Double click time	possibility for setting the time interval for the double-click function
Double click area	possibility for setting the active area on the surface of the display in the case of double-clicking
Normal mode	offers a return to the default settings of the touch screen display
Options	possibility of specific accessory setting for the touch screen display
Enable auto right click	permission for right-click functionality
Enable touch	switching off the functionality of the touch screen panel
Enable cursor stabilization	a function for stabilizing the cursor and others

## SETTING UP THE MONITOR IN OS WINDOWS

### Setting the contrast and brightness

For setting the contrast and brightness, press the working surface of the panel and hold it down until the options appear (right mouse click). Then choose: **Graphics Properties**. A window opens with settings for the characteristics of the monitor picture. Select the category **Color Correction** and set the gamma radiation, brightness and contrast. Confirm by pressing **OK** or **Apply**.

Figure 2.5 Setting the contrast and brightness



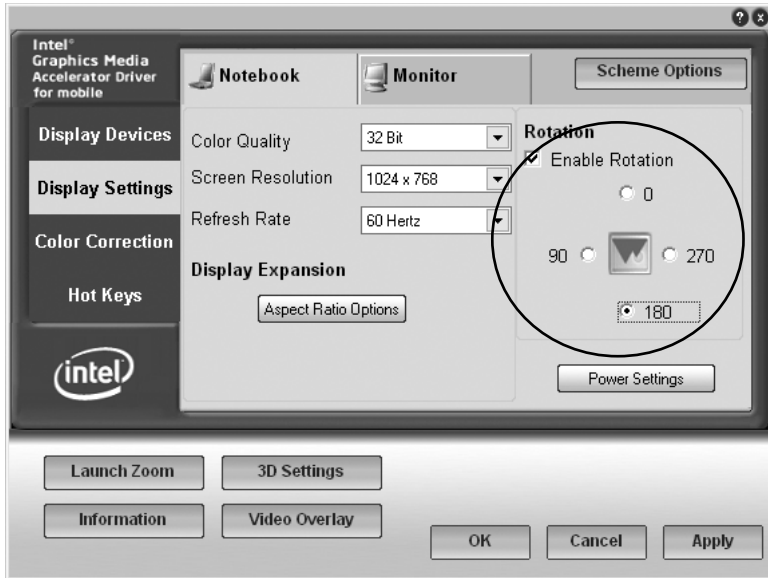
### Rotating the image by 180°

If the equipment is installed with the type of mounting by which the monitored is rotated 180° it is necessary to also set up the monitor.

To rotate the image, press the working surface of the panel and hold it down, until the options appear (right mouse click). Then select: **Graphics properties**. A window opens with settings for the characteristics of the monitor picture. Select the category **Display settings** and set **Rotation**. Confirm by pressing **OK**, or **Apply**.



Figure 2.6 Rotating the image by 180°



**Note:** In case of OS Linux CentOS using screensaver with options to log-in by password is necessary to use standard keyboard for typing password. Can not use touch screen keyboard.

## Windows 7

### TOUCH PANEL SETTINGS

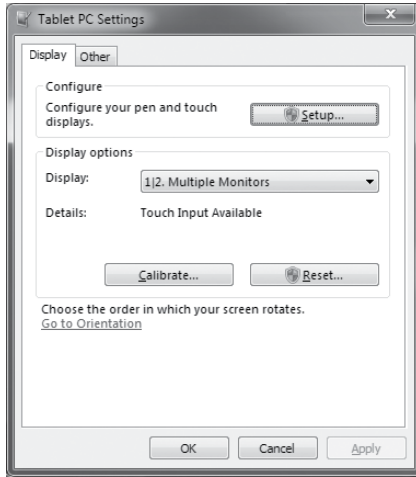
In Windows 7 you can find these settings in the Control Panel, which can be launched from the Start menu of Windows 7

#### Touch panel settings

In Windows 7, the touch panel calibration and options are found in Control Panel.

In the dialog that opens when you select **Control Panel** → **Hardware and Sound** → **Tablet PC Settings** you can choose screens which you want to use as a touch input and calibrate or reset calibration parameters for every connected touch panel.

Figure 12.1. Touch panel settings dialog



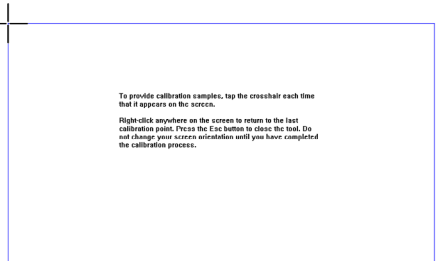
### Calibration of the touch panel

Perform the calibration of the touch panel in Windows 7 if the response to touch control is inaccurate or have other problems with touch controls. Start the calibration by clicking “Calibrate...” button in the “Tablet PC Settings.” window. During calibration follow the instructions displayed, tap each crosshair symbol, which appears in the corners of the screen. If the calibration has already been done, one crosshair symbol appears for each corner of the screen. If calibration data haven’t yet been stored, or were restored to their original values, four crosshair symbols are gradually displayed in every corner. After you have completed the calibration, the operating system will prompt you to save your settings. Confirm by pressing down the “Yes” button.

Figure 12.2. Calibration of the touch panel in Windows 7

a) first calibration

b) subsequent calibrations



### The touch control settings

The way of controlling the computer using the touch panel can be customized in a dialogue that launches through the **Control Panel** → **Hardware and Sound** → **Pen and Touch**. In this dialogue, among other settings, you can edit:

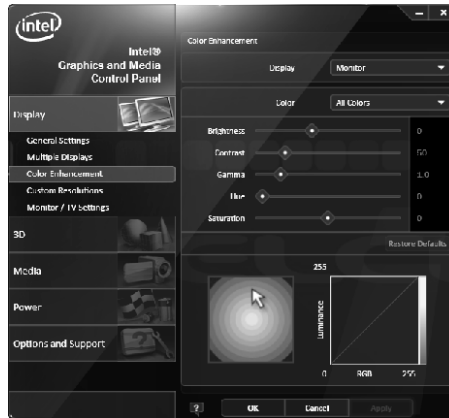
- actions performed for different ways of touch and movement on the touch panel
- touch control sensitivity
- the speed and accuracy required for double-taps
- time delay of the context menu when you tap and hold

## DISPLAY AND IMAGE SETTINGS

### Color correction

To adjust the contrast and brightness, press and hold the panel on the desktop until local menu appears (mouse right-click). Then select "Graphics Properties". A window opens with the settings, choose the category "Color enhancement". Then select display for which you want to change settings (the internal display or external display connected to the Uniq PC) and set the gamma correction, brightness, contrast, hue and saturation. Confirm with the OK or Apply button.

Figure 12.3. Setting the contrast and the brightness



### Rotating the image by 180°

If the device is mounted with the display rotated by 90° or 180° it is also essential to set the desktop rotation properly.

To set the rotation of the displayed image press and hold the panel on the desktop until local menu appears (mouse right-click). Then select "Graphics Properties". A window opens with the settings, choose the category "General settings" and set the "Rotation" to a proper value. Confirm by pressing OK or Apply.

Figure 12.4. Rotating the image by 180°



*Note : In Windows 7 portion of the settings included in the driver (such as display rotation) is also available from standard system dialogs. It doesn't matter where you change the settings, parameters are system-wide.*

## **WIRELESS CONNECTIONS**

If your Uniq PC contains optional WiFi and/or Bluetooth components, you can use them to communicate with other devices supporting these wireless standards. You need to use either built-in operating system functions or special utilities (supplied by communication device vendor together with the driver or by a third party) to create and use connections. Please refer to your operating system or respective device documentation.

## **CONNECTING AND DISCONNECTING A USB DEVICE**

When connecting any equipment to the Uniq PC observe the manufacturer's instructions for the given device. After connection of a USB device to a Uniq PC port, the operating system detects it and if it has a driver available for the device, it will load the driver and the device can then be used. If a driver is not automatically available, it is necessary to search for one and install it. Drivers are usually located on the CD supplied with the devices or can be downloaded from the Web site of the manufacturer.

If after connecting and using a USB device you want to disconnect, it is a good idea to remove it safely – first in the operation system (in order that all device operations be completed) and then after notification of the operating system to physically pull out the device's connector. The procedure for safe removal of a device depends on the operating system used. Connecting and disconnecting USB devices when the Uniq PC is switched off is always safe.

*Note : Not all equipment allows for safe removal of hardware. Safe removal makes sense mainly with equipment which stores data (hard disks, USB memory sticks) and which also use the write buffer. Equipment which is not shown on the list of equipment that can be safely removed can be disconnected without the procedure for safe removal.*

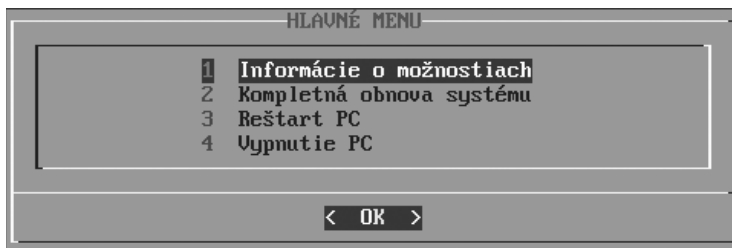


***EMERGENCY HELP***

## RESTORING THE OPERATING SYSTEM IN CASE OF MALFUNCTION

If the system files of the operating system (OS) fail and cannot be repaired or if the operating system cannot be launched, it is necessary to perform a complete system restore. The hard disk of this equipment contains a hidden partition, on which the installation application for the operating system standardly supplied by the manufacturer of this product is installed. For a complete restore of the operating system, switch on the equipment and repeatedly press the F10 key, until the logo "elcom - rescue" appears on the screen and subsequently a main menu with the possibilities for restoring the system.

Figure 3.1 Possibilities for restoring the system



Select a language (Slovak or English) and on the main menu select 2 – Complete restoration of the operating system. **Warning! This operation deletes all data on the drive, and data lost can no longer be recovered.** After confirming the deletion of all data, a window appears offering of operating system. After an operating system is selected, installation launches by itself. Consequently, it is necessary to proceed according to the instructions of the manufacturer of the selected operating system.

# ***WAYS OF MOUNTING***



The base of the Uniq PC is adjustable for different ways of placement and mounting. The basic ways of mounting it are on a table or a wall. The packaging includes the components necessary for its comfortable and easy placement on these types of basic surfaces.

There are other, less standard, solutions for mounting the panel, such as mounting on a body tube or using a standardized VESA mount. For these ways of mounting the panel, however, a specially prepared base is necessary for the Uniq PC supplied as a complete solution together with a specially prepared Uniq PC, be it for placement on a body tube or by using a standardized VESA mount.

**Figure 4.1 Possibilities for mounting**

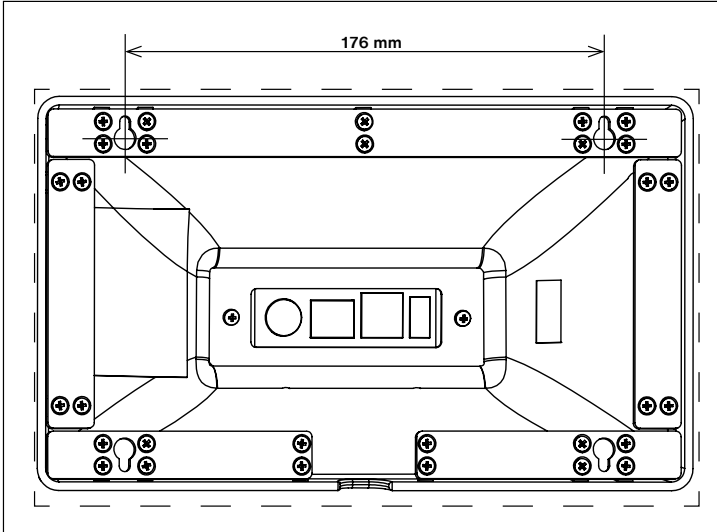


*Note: for placing a Uniq PC on a wall it is necessary to achieve a larger angle curvature of the monitor by rotating its legs by 180°. This operation is only authorized to be done at an ELCOM service center.*

### **Placement on a vertical surface (wall) for standard stand**

You'll find in the packaging of the Uniq PC a number of 4 × 16 mm drive screws. For anchoring the panel, it's enough to place two screws horizontally at a distance of 176 mm from each other. The screws must remain screwed in by at least 2-3 mm, in order to hang the panel from them. The base of the Uniq PC has on its bottom side metal slats with holes cut-out for hanging the panel. It may also be suspended in a position rotated by 180° according to the method of use. Always suspend the Uniq PC such that the narrower side of the screw holes is pointed upward; that is, always on the holes in the upper metal slat. It is possible to glue one, or if necessary, more anti-slip sticky pads on the lower metal slats of the Uniq PC base. This ensures the cushioned setting of the base on the surface.

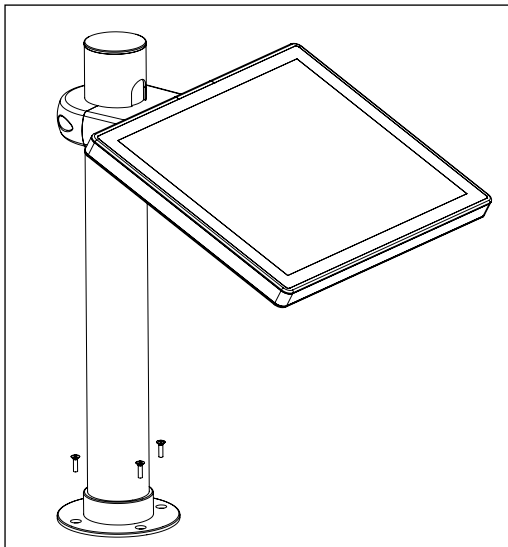
Figure 4.2 The method of attaching the base to a high mounting



### The base tube 500 mm and 1300 mm

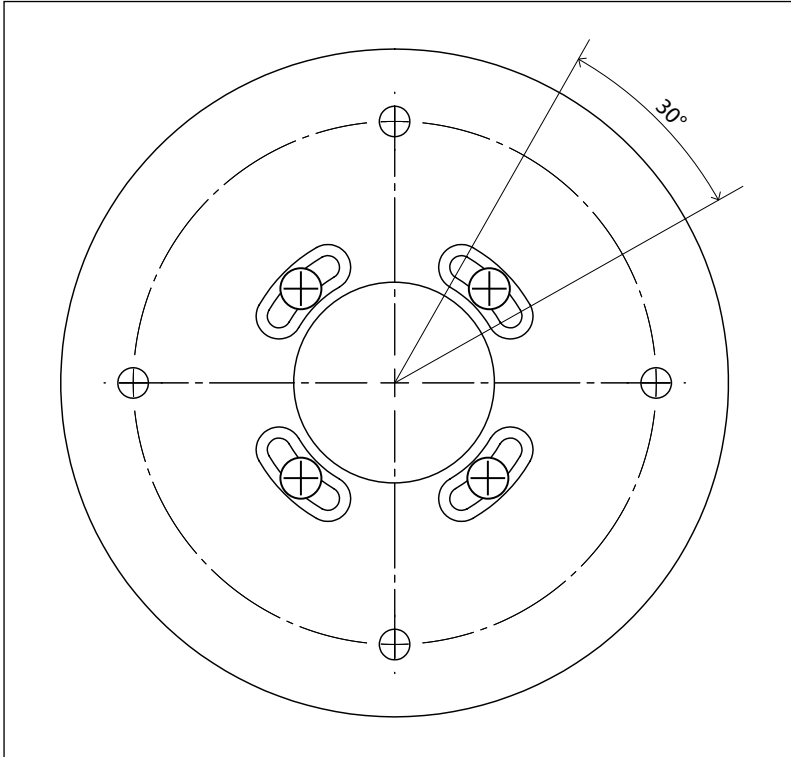
The base tube is a solid and firm solution with an intelligent design and protected cables. The cables are led through a metal tube in the base and this type of construction guarantees a high degree of IP 54 coverage. The base is anchored with the help of four screws to a table or another object. For anchoring the base to a ceiling it is necessary to also change the position of the monitor by rotating it 180°.

Figure 4.3 Ways of mounting the base



We can alter the setting of the position of the rotated base by loosening the four screws from the bottom of the base and by setting the required angle of rotation. For assuring the position, it is necessary to drive the screws and thus anchor the base to the table.

**Figure 4.4 A view of the base from the bottom - additional setting of the angle of the rotated base**



## IDENTIFICATION AND PROTECTIVE ELEMENTS

Figure 4.5 Identification and protective elements

